



COMPANY OVERVIEW 2022

OVERVIEW



Tradename was established in 1990 and incorporated as a Women-Owned Small Business in 2019.

- Core competency of custom engineered, fit-for-purpose unique valve manufactory.
- We guarantee:
 - I. 24x7 Availability.
 - II. 100% Traceability.
 - III. After Market Support.
 - IV. Transparent Processes.
 - V. Reliable, long lasting valve added solutions.

CERTIFICATIONS

- ISO 9001.
- Women-Owned Small Business.
- Minority Owned.
- JCP Certified.
- CMMC 1.0.
- NOFORN Level 1 clearance.
- American Petroleum Institute certifications 6D/6D-SS/6A.

DIFERENTIATORS

- Made in America.
- Non-standard custom-engineered Ball Valves.
- Quick turn-around.
- Smaller quantity order acceptable.

MANUFACTURED IN U.S.A.



ROBUST SUPPLY CHAIN

USA/C7 Countries
Based



LICENSED TO MONOGRAM

API 6D
6DSS
6A PSL 1, 2, 3
3G Certified



IN-HOUSE ENGINEERING

Design, Testing
And Inspection

LICENSES & CERTIFICATIONS

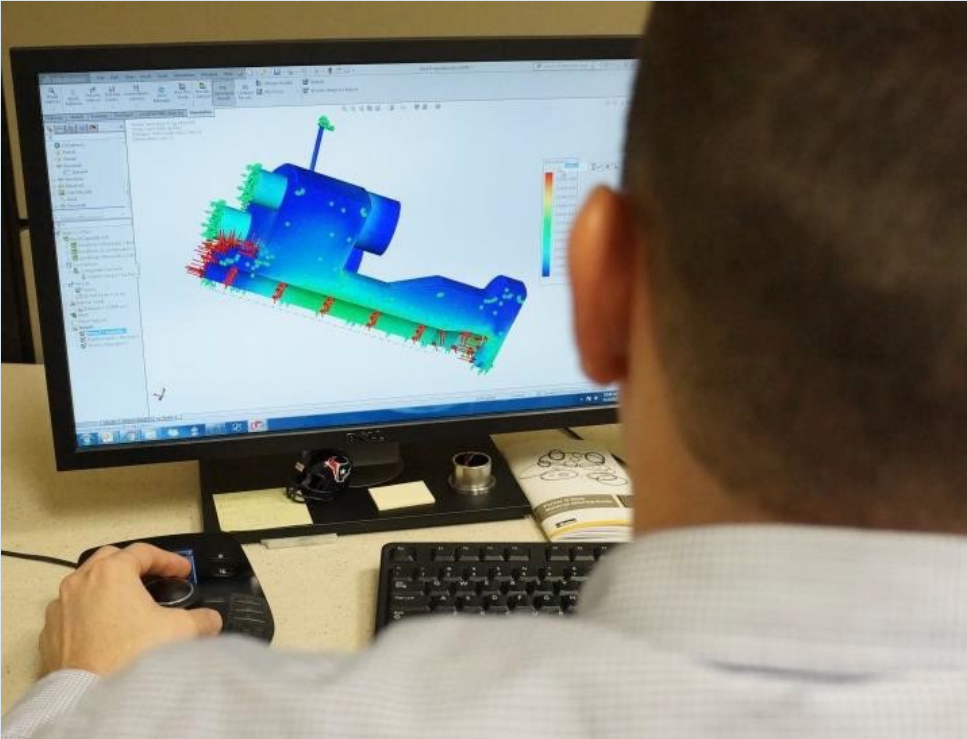


NOFORN
and Level One
Cleared Facility

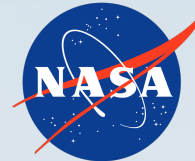


OUR TECHNOLOGY

- Subsea design experience at 10,000 feet depth of water.
- High pressure design (API6A) and experience at 15,000 psig.
 - ♦ Liquid & Gas Zero Leakage.
 - ♦ Subsea, Onshore, Offshore, & Aerospace.
- High-temperature design and experience to 1,600F.
- Low-temperature design and experience to -320F.
- Abrasive service – “Solids Proof”.
- Power and Refinery Valves.
- Rotary ball control technology.
 - ▶ Trim for D-Ball.
 - ▶ Multistage Slot Trim (developed for the U.S. Navy).
 - ▶ Noise reduction.



CURRENT APPROVALS



PARTIAL LIST

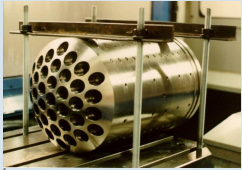
COMPANY TIMELINE

1990

Cornerstone Valve Was Founded and Aerospace Work Begins.



1991



US Navy Works Begin, First Oil & Gas Order Shipped.

1994

Obtained API 6D & API 6A PSL 1, 2, 3, 3G Licenses.

First Subsea Valve Manufactured.



1998



Metal Seated Valves For High Temperature Polypropylene Service Shipped.

1999

Top Entry Valves For HP Maleic Acid Service Shipped.



2001



ISO 9001 Obtained. Launch Pad Valves For Nitrogen Service Shipped.

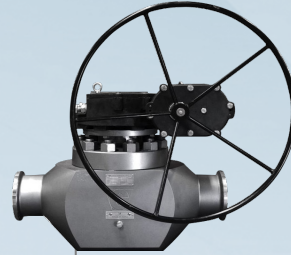
High-Pressure Gas System Valves & Metal-Seated valves for Hot Gas At 700 °F shipped.

2003

First Major Deep Water Platform Topside Valves Shipped to Gulf of Mexico.



2011



Signs exclusive licensing agreement with Crane Nuclear to manufacture & sell Cornerstone's product line of top entry ball valves up to 36" to the nuclear power industry.

2013

Cornerstone Valve successfully acquires EII Valve Co. and relocates to 80,000sqft temperature-controlled manufacturing facility in Stafford, Tx.

2017

Obtained API 6DSS License; Only Second company in U.S.A. to have this license. Bags API 10k topside project on Leviathan project from Noble Energy.



2018



Develop API 10K Cryogenic Valve for SpaceX.

2019

Relocates to current location in Missouri City, Texas.



Releases Gen2 Floating Configuration for power gen market.

SEVERE SERVICE ENGINEERING

Extreme Temperature

Cornerstone Cryogenic Valves function flawlessly in a North African Gas-separation facility at 827 psig And -150F while working day in and out.



Extreme Sludge

After 2 Years Of Brutal Use, Cornerstone's Valves Are Still Working In A Paper Mill's Continuous Digester, Day In And Day Out.



Extreme Depth

Our Top-entry Subsea Valves Are Qualified To 10,000 Ft Water Depth. Working Day In And Day Out.



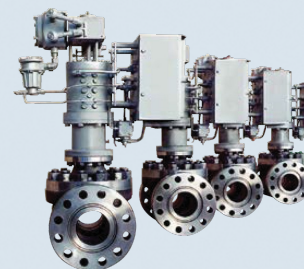
Extreme Hazard

SB-2 Workhorse Valves Still Operate Day In And Day Out - 8 Years After Replacing Brands That Cost A Company \$5,000 A Week In Maintenance.



Extreme Timing

The Cornerstone TE-1 style valve – 3000 Psi full cycle in 17 milliseconds – operates at Cape Canaveral day in and day out.



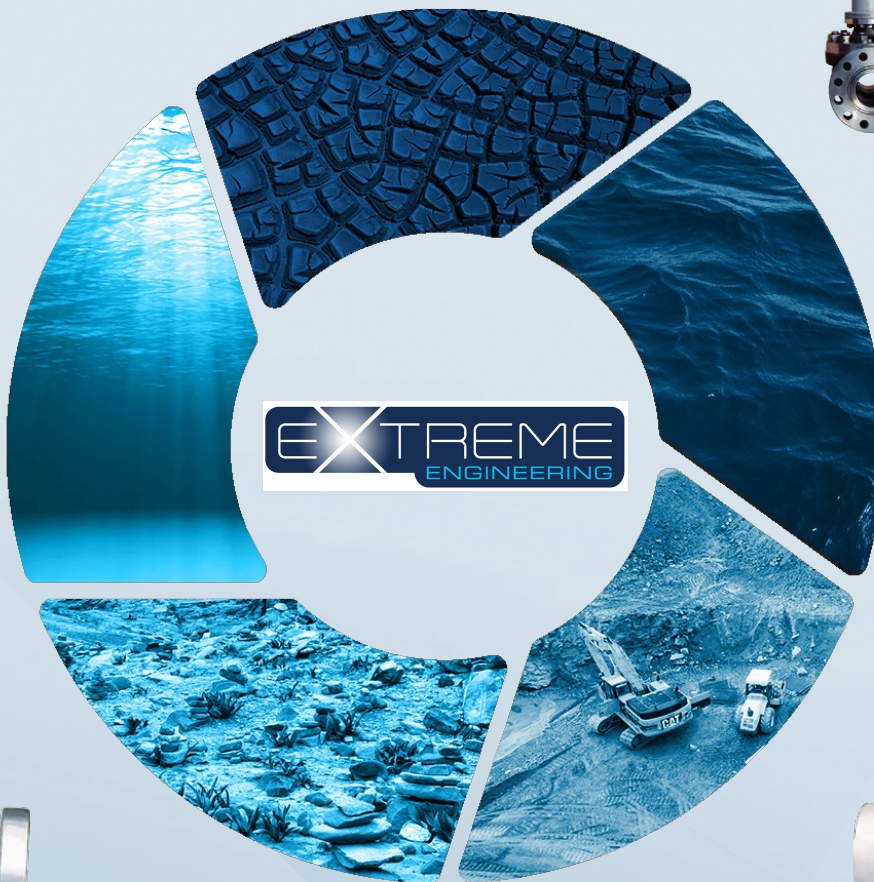
Extreme Savings

300 Miles Offshore, Every Ounce And Inch Make A Difference. Our Efficient Top-entry Valves With Integral Hub Ends Saved 100 Tons And Over \$450K, While Working Day In And Day Out.



Extreme Media

Cornerstone Valves Used In An Iron Ore Processing Facility Have Had A Service Life For 20 Times Those Of Previous Valves. They Continue To Work, Day In And Day Out.



QUALITY & SERVICE

In an industry where reliability is a must, why take a chance on unknown product integrity?

Quality is realized at every level of the organization utilizing a process approach platform. Each component within a Cornerstone valve assembly has a certificate (C of C, or MTR) for verification. Each valve, along with its components, can be tracked to its source with historical records maintained for a 10-year minimum (many date back to 1991).

Standard operating procedure at Cornerstone Valve includes:

1. Customer valve and testing specifications incorporated.
2. Each valve tested, cycled fully, and leakage verified to applicable industrial API, ISO/ANSI standards.
3. All testing and inspection data points are documented.
4. A complete design package for every valve manufactured
5. Valves certified to the customer requirements and applicable design standard.

Cornerstone produces valves you trust – for your business and employee safety.

Repair Service:

- In-house repair – Call 281-880-8188 with instructions for shipping/authorization.
- On-site repair – our trained and certified field service personnel are ready and available to be transported to your site – onshore or off.



Training:

Cornerstone's personnel are available to train your staff in the operation and maintenance of valve products.

Part of Cornerstone's mission is to help educate clients in the selection of options available for each valve and the importance of those choices. We want to be your partner in developing valve for your business.

PAST PERFORMANCE

OIL & GAS PRODUCTION

High pressure, high temperature, high cycle rate, extreme reliability is a must. Hard-facing cobalt-based alloys are frequent industry solutions.

Our solidly built ball valves are available with:

- Top Entry Ball Valves
- Top Entry Swing Check Valves
- End Entry Ball Valves
- Rotary Control Valves/Chokes



OIL & GAS TOPSIDE

Oil & Gas Topside surfaces need to be overlaid with a corrosion resistant alloy.

Hub end connection valves reduce the overall weight. With non-flanged connections, shorter face-to-face means less space, less weight.

Top entry, in-line serviceable valves with hub end make change-out or repair a snap - in place.

Industry Specific Valves:

- Top Entry Ball Valves
- Top Entry Swing Check Valves
- End Entry Ball Valves
- Rotary Control Valves/Chokes



OIL & GAS SUBSEA

Deep installations – deep investments. Cornerstone recommends a one-piece top-entry valve with an integral ball trunnions stem for control, alignment and maximum pipe stress resistance during installation.

Our multiple sealing systems assure no leaks and are available in:

- Top Entry Ball Valves
- Top Entry Swing Check Valves

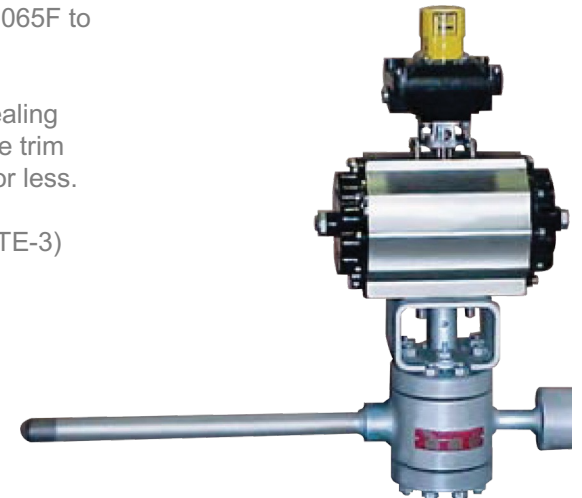


POWER GENERATION

Industry conditions range from 500 psi at 1065F to 2420 psi at 660F .

Our TP-1 series is a top-entry upstream sealing design and is serviceable in-line. Complete trim change-outs can be performed in 2 hours or less.

- Top Entry Ball Valves (TP-1, TE-1 and TE-3)
- Rotary Control Valves



PAST PERFORMANCE

CHEMICAL & PETROCHEMICAL

These are Cornerstone's workhorse valves. In the face of lethal media, corrosive application and toxic emissions, these valves don't give up.

One of the industry recommended valves has a solids-proof design that has special scraper- seat faces cleaning the ball every cycle – preventing build-up.

Industry Specific Valves:

- Top Entry Ball Valves.
- Top Entry Swing Check/Valves.
- End Entry Ball Valves.
- Rotary Control Valves/Chokes.



MINING

Durable valves are called for in this extremely diverse industry. Cornerstone's trunnion mounted ball designs are the choice for rugged conditions.

Live loaded scraper seats, smooth full bore flow passages, and careful material selections extend the service life of your valves.

Our solidly built ball valves are available with:

- Top Entry Ball Valves
- End Entry Ball Valves
- Split Body Ball Valves



REFINING

Operating conditions to 1650°F require valves manufactured to meet site-specific safety plans. Suitable metal-to-metal wear parts, live loaded fire seats, body cavity "solids proofing" and self-cleaning surfaces are just part of the specifications available from Cornerstone Valve.

Our valves for refining include:

- Top Entry Ball Valves
- Top Entry Swing Check Valves
- End Entry Ball Valves
- Rotary Control Valves
- Split Body Ball Valves



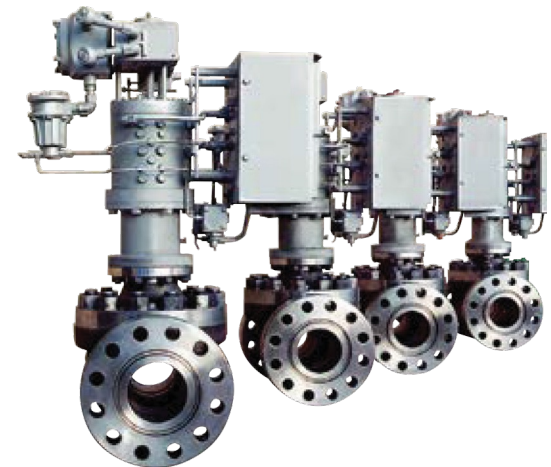
AEROSPACE

One of Cornerstone Valve's most extreme engineering challenges - valves for noise control, gas and water systems at space launches.

The solution - a ball-seat interface design that closes off bubble-tight, full cycle in 17 milliseconds. The quick opening actuators are pressurized with nitrogen to 3,000 psig.

Our products for aerospace include:

- Top Entry Ball Valves
- Top Entry Swing Check Valves
- Rotary Control Valves



PAST PERFORMANCE

OIL & GAS CRYOGENIC

Gas processing and blowdown systems must be manufactured to withstand temperatures of -50F to -320F and below.

Cornerstone Valve's symmetrical component design permits uniform expansion and contraction. Live loaded seals allow for intense dimensional changes yet assure closure tightness.

Cornerstone engineered valves for cryogenic usage include:

- Top Entry Ball Valves
- Top Entry Swing Check Valves
- End Entry Ball Valves
- Rotary Control Valves



PULP & PAPER

High pH levels, abrasion, and extreme pressure in steam and water systems.

Our recommended ball valves are designed with trunnions and seat spools isolated from media for long-term usage. Constant self-cleaning, solids proofing and careful selection of industry specific coating systems are available in:

- Top Entry Ball Valves
- Split Body Ball Valves



MARITIME

Nuclear powered vessels require an elite class of standards. Highly detailed documentation and stringent testing include shock testing, vibration testing and extensive operational testing.

Cornerstone products for maritime industry:

- Split Body Ball Valves
- Top Entry Ball Valves
- Rotary Control Valves



CORNERSTONE VALVE

1535 Industrial Drive
Missouri City, TX 77489

Phone: 281-880-8188
Fax: 281-880-8191

QUESTIONS?
How can we serve you?

sales@cornerstonevalve.com
www.cornerstonevalve.com

